

# P7183 2 FT LED WRAP

 Ceiling mounted • Damp location listed **PROGRESS LED**


## Description:

Wrap around with clear extruded acrylic diffuser. Squared white end caps. Surface mounted white chassis regressed within trim. The fixture is energy efficient LED with 2324 lumens and 101 lumens per watt. 3000K 80 CRI. ENERGY STAR.

## Specifications:

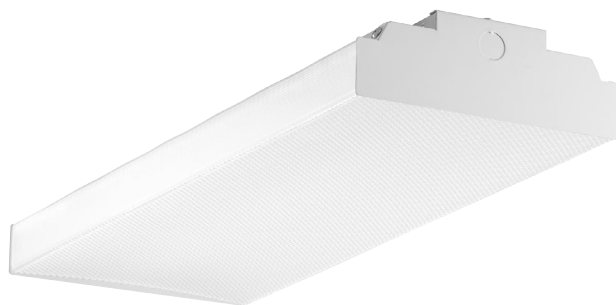
- White (-30) (Painted)
- Steel construction
- Clear extruded prismatic acrylic diffuser
- Squared white end caps.
- Dimmable to 10% with many Forward Phase (Triac) dimmers
- Damp location listed
- Chassis covers a standard 4" octagonal recessed outlet box
- Mounting No for outlet box included
- ENERGY STAR® qualified

## Performance:

Number of Modules	1
Input Power	23w
Input Voltage	120 V
Input Frequency	60 Hz
Lumens/LPW	2324/101 (LM-79)
CCT	3000 K
CRI	80 CRI
Life (hours)	54,000 (L70/TM-21)
EMI/RFI	FCC Title 47, Part 15 Class B
Min. Start Temp	-25 °C
Max. Operating Temp	30°C
Warranty	5 year warranty
Labels	cULus Damp location listed ENERGY STAR® qualified

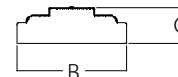
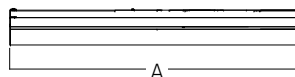
## P7183-3030K8

## Images:



## Dimensions:

- A) Length: 24"
- B) Width: 9"
- C) Height: 3-1/16"



## Photometrics:

## P7183-3030K8

<b>ELECTRICAL DATA</b>	<b>P7183-3030K8</b>
Input Voltage	120 V
Input Frequency	60 Hz
Input Current	0.195 A
Input Power	23
Power Factor	
THD	<20%
EMI Filtering	FCC Title 47, Part 15 Class B
Operating Temperature	-25 °C to 30°C
Dimming	Yes*
Over-voltage, over-current, short-circuit protected	
*See Dimming Notes for more information	

### P7183-3030K8

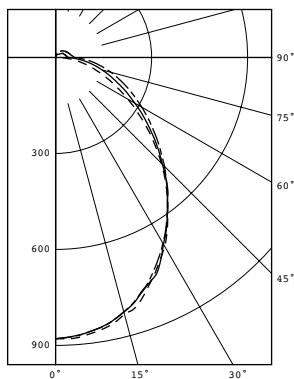
LED Light Engine: 3000 K 80 CRI CRI  
 System Wattage: 23  
 Fixture delivered lumens: 2324  
 Fixture Efficacy: 101  
 Spacing Criteria: 1.15

### CANDELA DISTRIBUTION

CANDELA	DISTRIBUTION					FLUX
0.0	22.5	45.0	67.5	90.0		
0	879	879	879	879	879	879
5	877	877	870	869	871	83
15	831	832	824	824	823	233
25	739	738	746	732	730	339
35	611	612	608	610	607	382
45	467	470	472	483	481	367
55	324	331	344	358	363	309
65	204	216	236	255	263	234
75	113	128	150	171	179	158
85	38	55	77	96	101	81
90	2	20	42	59	64	
95	1	15	35	49	53	35
105	2	14	31	42	45	29
115	2	13	27	36	39	24
125	3	12	24	32	35	19
135	3	10	20	27	29	14
145	3	9	16	21	23	9
155	4	7	12	15	17	5
165	4	5	7	10	10	2
175	5	5	5	5	5	0
180	3	3	3	3	3	

### ZONAL LUMEN SUMMARY

ZONE	LUMENS	%FIXT
0-30	654	28.2
0-40	1036	44.6
0-60	1712	73.7
0-90	2184	94.0
90-120	89	3.8
90-130	108	4.6
90-150	132	5.7
90-180	140	6.0
0-180	2324	100.0



## P7183-3030K8

### Dimming Notes:

---

P7183 is designed to be compatible with many Triac/Forward Phase controls.

The following is a partial list of known compatible dimmer controls.

### Dimming Controls

---

Lutron NTELV-300

Leviton 6674

Lutron AYLV-600P

Lutron NTLV-600

Lutron MAELV-601

Leviton AWRMG-EAW

Lutron N-600

Dimming capabilities will vary depending on the dimmer control, load, and circuit installation. Always refer to dimmer manufacturer instructions or a controls specialist for specific requirements.

Dimmer control brand names where identified above are trade names or registered trademarks of each respective company.